

CHROME
SERIES®

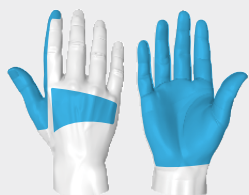
4018

HexArmor®

Chrome Series®. Our signature mechanic's style glove line that redefined cut protection, impact resistance, and dexterity in the safety industry.

The premier maintenance and repair glove, the Chrome Series® 4018 features an interior layer of SuperFabric® brand material on the palm combined with an exterior knuckle patch to deliver outstanding cut, abrasion, and both industrial & fine puncture protection when you need it most. The glove's durable synthetic leather palm maintains excellent grip in dry and light oil conditions and is complete with touchscreen capabilities, so you can be certain your hands are protected in any situation.

Protection zones



SuperFabric®
protection zone



ANSI/ISEA 105-2024
CUT

A6



ANSI/ISEA 105-2024
GRAM SCORE

3941



ANSI/ISEA 105-2024
PUNCTURE

3



ANSI/ISEA 105-2024
ABRASION

6



ANSI/ISEA 105-2024
CONTACT HEAT

2



ANSI/ISEA 105-2024
NEEDLESTICK

2

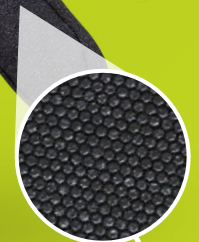


EN 388: 2016

4X22F

Attributes

Style:	Mechanics
Grip:	Dry or light oil
Cuff style:	Neoprene with hook and loop closure
Sizes:	5/XXS through 12/3XL



Touchscreen



SuperFabric®
inside

Product features

- SuperFabric®** brand material provides industry-leading cut, puncture, and abrasion resistance on the palm (interior layer) and knuckle patch
- Synthetic leather palm provides reliable grip in dry or light oil situations while increasing abrasion resistance
- Touchscreen capabilities on thumb and index fingertip
- Interior seams are reinforced with a double stitched core-spun thread, adding further durability and longevity
- Neoprene cuff with hook and loop wrist closure for a comfortable, secure fit
- Pull tab for easy don and doff
- Form-fitting, quality materials for increased dexterity and all-day comfort
- Launderable
- Vend-packed

Call **1.877.MY ARMOR** or visit **hexarmor.com**

HexArmor® products are cut and puncture resistant, NOT CUT AND PUNCTURE PROOF. Do not use with moving or serrated blades or tools. User shall be exclusively responsible to assess the suitability of the product as specified for any individual application or use. Protection zones are to be used as a general guide. Actual product protection zones may differ. Product features, design, protection zones subject to change.

Protected by patents and patents pending

*SuperFabric® is a registered trademark of HDM, Inc.